

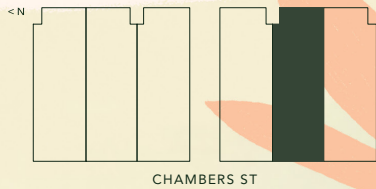
C

**3 BEDROOM + DEN
2 BATH**

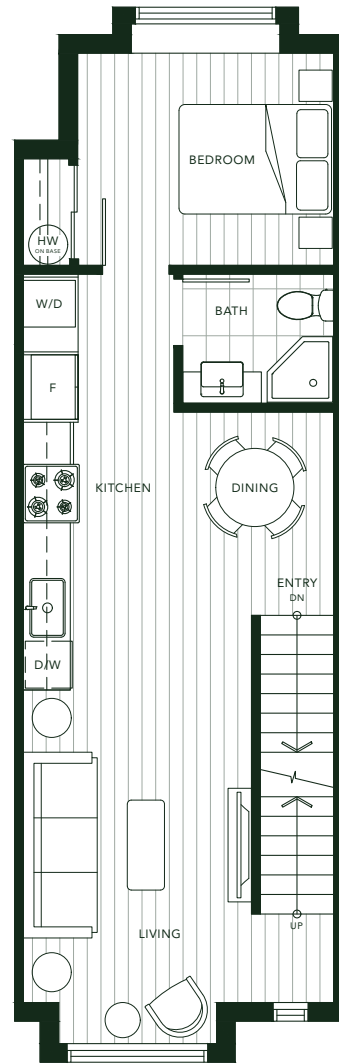
**CITY HOME
UNIT 4**

Living	970 SF
Deck	60 SF
Terrace	110 SF
Front Porch	31 SF
Total	1,171 SF

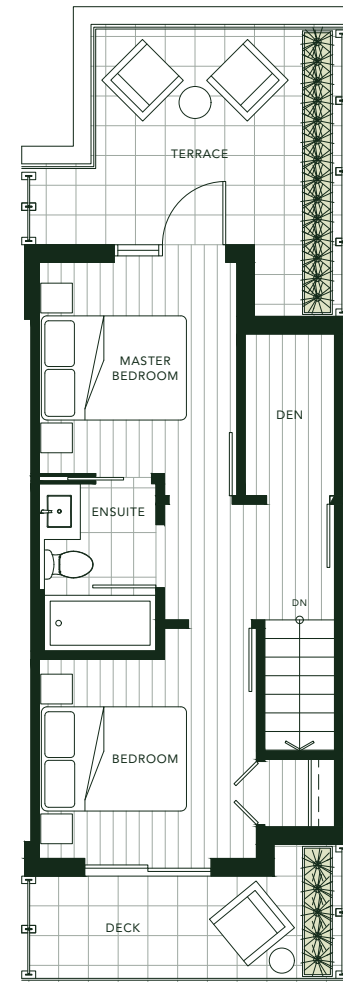
CITY HOMES



In the continuing effort to improve our homes, the developer reserves the right to modify or change plans, specifications, finishes and features without notice. Square footage is based on architectural drawings and is subject to change. E.&O.E.



LEVEL 3



LEVEL 4