

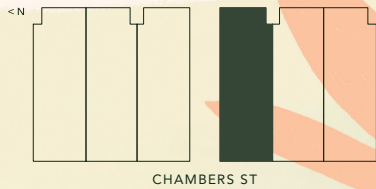
# A

**3 BEDROOM + DEN**  
**3 BATH**  
 WITH LOCK OFF OPTION

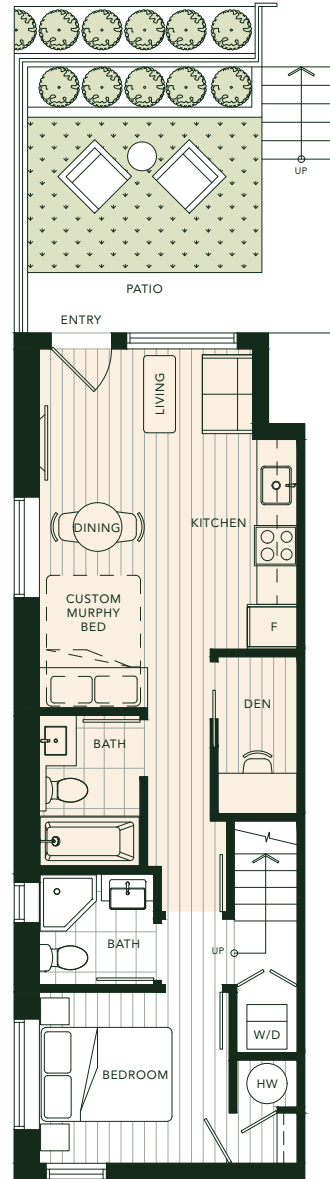
**GARDEN HOME**  
**UNIT 5**

|              |                 |
|--------------|-----------------|
| Living       | 1,111 SF        |
| Front Porch  | 52 SF           |
| Patio        | 244 SF          |
| <b>Total</b> | <b>1,407 SF</b> |

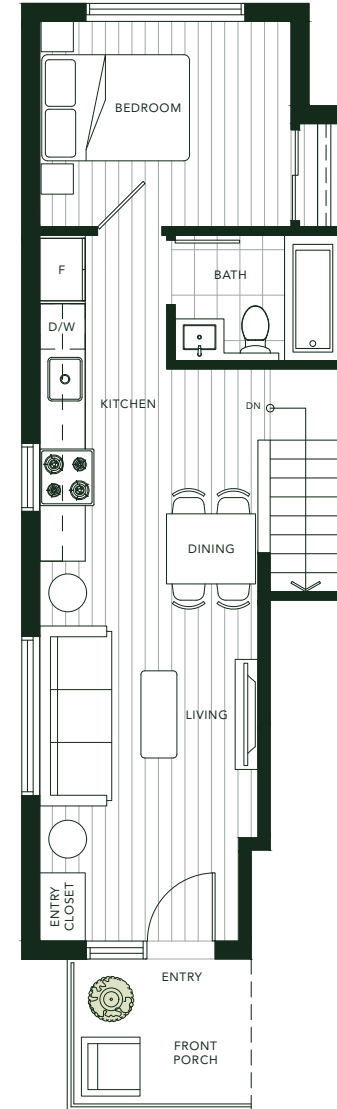
**GARDEN HOMES**



In the continuing effort to improve our homes, the developer reserves the right to modify or change plans, specifications, finishes and features without notice. Square footage is based on architectural drawings and is subject to change. E.&O.E.



LEVEL 1



LEVEL 2